



# Cross Stitch

## "Fall Leaves"



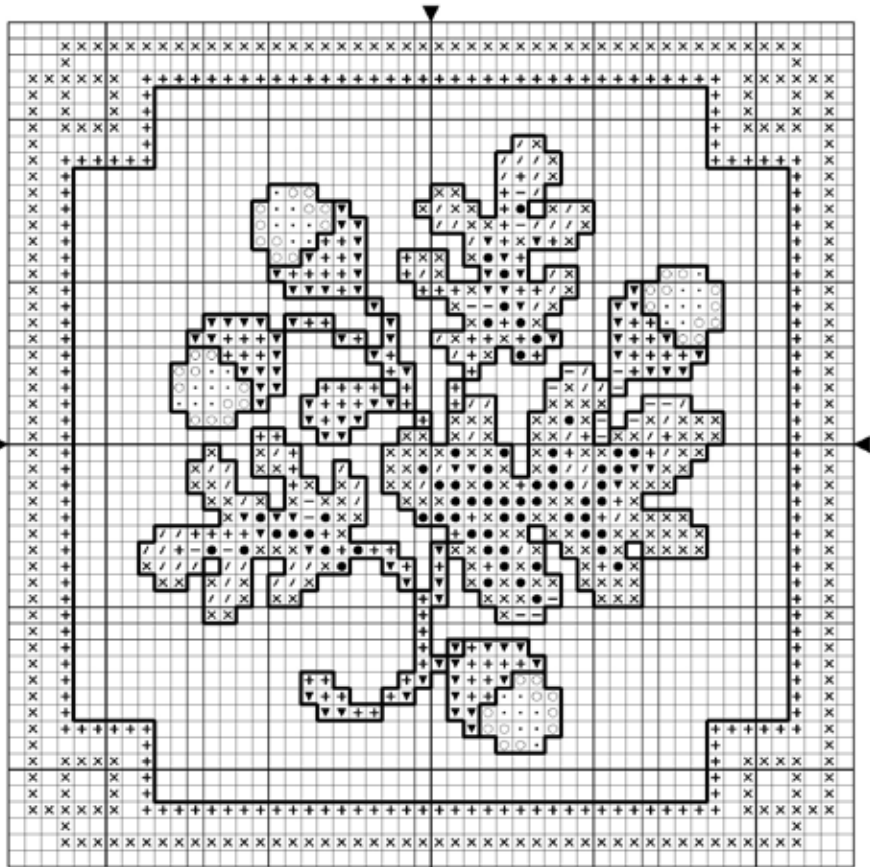
Symbol	Sullivans Floss Color Number	Description
X	45118	Fern Green
/	45119	Light Fern Green
▼	45198	Ultra Very Light Topaz
-	45328	Dark Yellow Beige
O	45329	Medium Yellow Beige
.	45330	Light yellow Beige
●	45331	Dark Green Gray
+	45426	Very Dark Old Gold
BS	45351	Black Brown

Stitched on 14-count Aida  
using two strands of  
**Sullivans Embroidery Floss**  
with a size 26 Tapestry Needle.

**Design Size:**  
50 stitches wide x 50 stitches high  
(3<sup>5</sup>/<sub>8</sub>" wide x 3<sup>5</sup>/<sub>8</sub>" high on 14-count)

All Cross Stitch worked with two strands of Sullivans Embroidery Floss.

All Back Stitch worked as noted below:  
Back Stitch (BS) the line inside border with one strand of **45198**; work all remaining Back Stitch with one strand of **45351**.



DMC-to-Sullivans Floss  
conversion chart  
available at  
[www.sullivansfloss.com](http://www.sullivansfloss.com)

Cross Stitch design by Sue Hillis Designs, [www.suehillisdesigns.net](http://www.suehillisdesigns.net)

"Fall Leaves" © 2009, Sullivans USA. Sullivans® is a registered trademark of M.T. Sullivan & Co. Pty. Ltd.

Sullivans USA • 4341 Middaugh Avenue • Downers Grove, IL 60515 • 800-862-8586 • [www.sullivansfloss.com](http://www.sullivansfloss.com)

This chart may be reproduced for personal use and for teaching purposes only.  
This chart is NOT for resale.

Fall Leaves Project Sheet



Item No. 38307