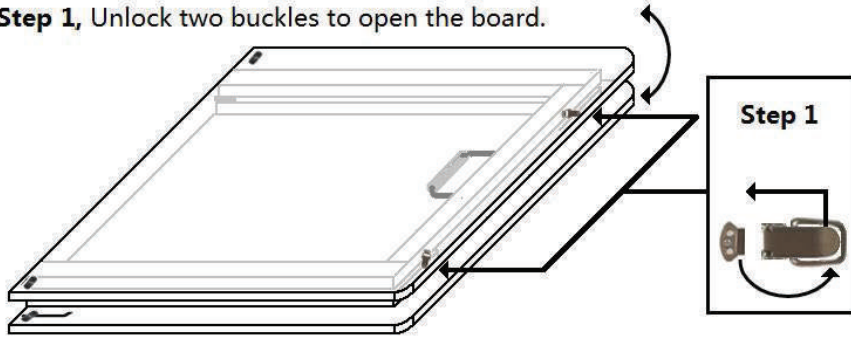


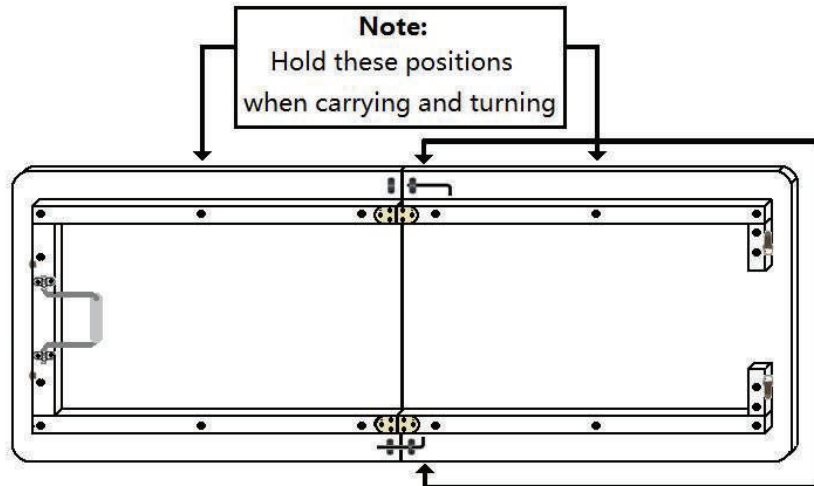
This BetterBoard is pre-assembled before shipping, it is very easy and convenient to use.

**Step 1,** Unlock two buckles to open the board.

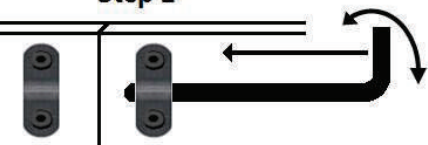


**Step 2,**

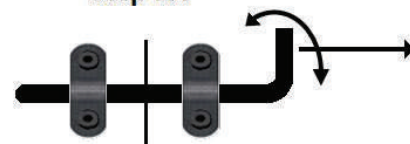
Lay the BetterBoard flat, turn and push the latch into the brackets at the appropriate position.



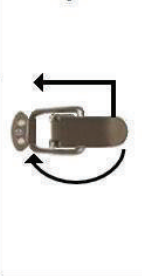
**Step 2**



**Step 3A**



**Step 3B**



**Step 3,**

when it is not in use, please turn and pull the latch from the left bracket and hold it in the right bracket at appropriate position - see step 3A, and close the boards, then close two buckles at the end of the board to lock it - see step 3B, to secure the BetterBoard while carrying or storing.

A fitted Ironing Cover with protective pad is included with your BetterBoard. To use it, cover the surface of the BetterBoard after securely opening and locking it.

**Safety & Maintenance.**

This BetterBoard is not a toy, Do not let children play on, under, or around it. To clean it, use a cloth or sponge with mild soap. (Never use anything abrasive). Never rest a hot iron directly on the surface.

**Sullivans USA**

4341 Middaugh Ave. Downers Grove, IL 60515 1-800-862-8586 Fax: (630) 435-1532

Email: [Sullivans@SullivansUSA.net](mailto:Sullivans@SullivansUSA.net)

**M. T. Sullivan & Co. Pty. Ltd.**

40 Parramatta Road Underwood, Brisbane, Queensland Australia

**Sullivans Enterprises (N. Z.) Ltd.** 28 Sir William Ave. East Tamaki, Auckland New Zealand

For further assistance, please call 800-862-8586. Some restrictions apply. See website for details.



**Installation and Washing instructions for your fitted 100% Cotton Ironing Cover.**

**Preparing your cover for use:**

Use a coated iron or use a non-stick cover such as **Sullivans Iron Glide** for your metal-bottomed iron. Using an ironing cloth (muslin or equivalent), iron on high heat to smooth out any wrinkles and temper the cover. Your ironing cover is now ready to use.

**Installation Instructions:**

**Step 1**, Open BetterBoard to expanded position.

**Step 2**, Place foam backing on surface, matching to length and width of board.

**Step 3**, Place ironing cover over BetterBoard.

**Step 4**, Tuck each corner of the cover gently around the corners of the BetterBoard.

**Step 5**, Secure the ironing cover by tightening the strings located at two of the corners.

**Step 6**, When through, remove the cover before closing the BetterBoard.

**Washing Instructions:**

**Step 1**, Hand wash in cool water.

**Step 2**, Lay flat to dry. Do not wring.

**WARNING:** Do not attempt to close the BetterBoard while the ironing cover is still attached. Always remove the cover before closing. Not doing this may damage the cover.



# DO NOT RETURN TO THE STORE

**FOR ASSISTANCE WITH MISSING OR REPLACEMENT  
PARTS, INSTALLATION, OR INFORMATION**



[www.sullivansusa.net](http://www.sullivansusa.net)

**PLEASE CALL US AT**  
**800.862.8586**



[www.sullivansusa.net](http://www.sullivansusa.net)

Sullivans USA, Inc. will replace any missing or defective parts within 30 days of purchase. Fax a dated receipt with your contact information, the lot number on your instructions, and your request to **630-435-1532** or e-mail to **Sullivans@SullivansUSA.net**. To expedite this process, include any parts you may need in your request. This policy does not apply to damages due to shipping. For further assistance, please call 800-862-8586.

Please note that the no-charge Replacement Policy does not apply to items sold as is, clearance, closeout, final sale, etc. Any parts requested under these circumstances will be charged to the customer, including shipping charges. Shipping charges for replacement parts to Alaska, Hawaii or any point outside of the Contiguous United States are not covered under our policy. Some restrictions apply. See website for details. If you are outside of the 30 day period, replacement parts are available for purchase.

**4341 MIDDAUGH AVENUE • DOWNERS GROVE, IL 60515 • ORDERS: 800.862.8586 • FAX: 630.435.1532**